

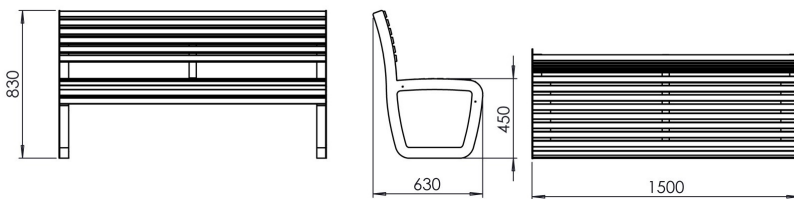


TRAPO bench - 150 cm wide with a wooden seat and a steel structure.

The LTR018.04 model has a backrest.

The TRAPO collection is a complete line of products distinguished by its unique appearance and ergonomics. The collection redefines the space, giving it a representative and friendly character at the same time.

Dimensions and materials available below.



MATERIALS



SAPELI

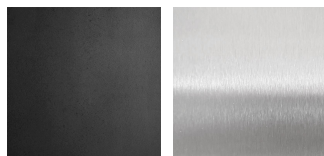
IROKO

ASH



POWDER
COATED STEEL

STAINLESS
STEEL



www.fulcosystem.com

contact@fulco.pl

phone no.: +48 32 305 05 80