

# HETTA **WOOD** 120

Beauty locked in the details.

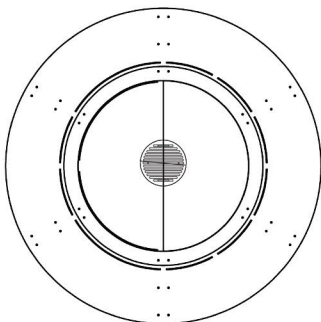
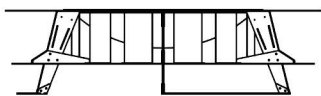
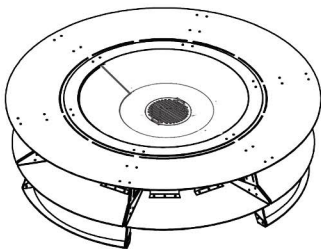
# HETTA SUPPLY



## TECHNICAL DATA

Diameter	116 cm
Height	31 cm
Cladding thickness	4 mm
Diameter of combustion chamber	60 cm
Weight	95 kg
Number of wood chambers	6 pcs.
Chamber capacity	0,15 m <sup>3</sup>




## Construction



## Description

Hetta Wood hearth is a pure combination of steel, wood and fire. We believe that fire is so beautiful on its own that it does not require any excessive additions. When manufacturing this hearth, we opted to use the best steel on the market. Hetta Wood is the perfection of the circular form combined with the beauty of steel and refined in every detail.

## Construction material

-  Corten steel
-  Black Steel + INOX
-  INOX

## Accessories

- INOX grate
- Closing lids
- Cover