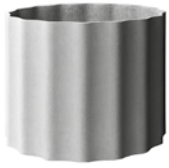


eternit®

2022
01.01. – 31.12.



SOFTLINE



KOLONNA 3 sizes



ALTO 3 sizes



SAMURAI



GEISHA



SPINDEL 2 sizes



DELTA 35 2 sizes



DELTA 45 9 sizes



DELTA 45 5 sizes



DELTA 45 3 sizes



DELTA 60 7 sizes



DELTA 60 3 sizes



TOKYO 3 sizes



BIASCA



LAUSANNE 2 sizes



BONSAI 3 sizes

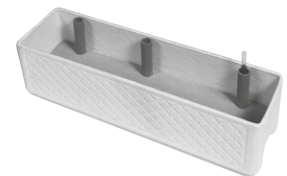
URBAN GARDENING



BALCONIA 4 sizes



BALCONIA DECOR 4 sizes



BALCONIA RESERVOIR

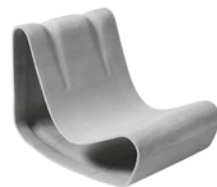
DESIGN



SPONECK CHAIR



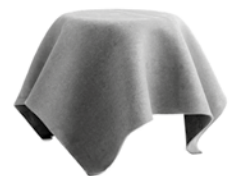
SPONECK TABLE



GUHL CHAIR



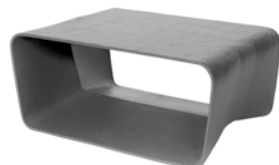
GUHL TABLE



HOCUSPOCUS TABLE



ECAL CHAIR



ECAL TABLE



CHEERS WINE RACK



TRASH CUBE STOOL



SUMO 2 sizes



TWISTA



TRENTA-3



SESSANTA-6



RONCO 2 sizes



DELTA 60 2 size



KYOTO 6 sizes



KYOTO LOW 5 sizes



OSAKA 5 sizes



OSAKA LOW 4 sizes



OSAKA 106



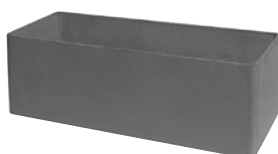
ALADIN 3 sizes



HIVE



MAIA



DELTA 25 2 sizes



CUSTOMLINE 2 sizes



DUNE LOUNGE



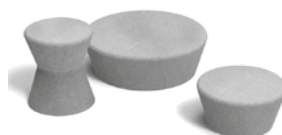
DUNE TABLE



DIE BANK BENCH



BIRDY NEST BOX



PORTO TABLE&STOOL





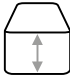









MOLD LAMP

5 SOFTLINE

| | | | | | | GREY | ANTRACITE | NATURAL EXPRESSION | CUSTOM COLOR | |
|------------------|-----------|-------|--------|---------|--------|---------|-----------|--------------------|--------------|-----|
| ALTO | | | | | | No | CHF | No | CHF | CHF |
| | Ø39/26 cm | | 55 cm | 11 kg | 45 l | 8025533 | | 8053986 | | |
| | Ø42/26 cm | | 65 cm | 12,5 kg | 62 l | 8011930 | | 8053987 | | |
| | Ø45/26 cm | | 75 cm | 16 kg | 79 l | 8011931 | | 8053988 | | |
| SUMO | | | | | | | | | | |
| | Ø35 cm | | 40 cm | 8 kg | 40 l | 8038640 | | 8054075 | | |
| | Ø45 cm | | 50 cm | 14 kg | 77 l | 8047946 | | 8054076 | | |
| KYOTO | | | | | | | | | | |
| | Ø35 cm | | 36 cm | 6 kg | 23 l | 8034611 | | 8054040 | | |
| | Ø44 cm | | 45 cm | 10,5 kg | 50 l | 8029357 | | 8054041 | | |
| | Ø53 cm | | 55 cm | 13,5 kg | 90 l | 8032048 | | 8054042 | | |
| | Ø70 cm | | 54 cm | 20 kg | 160 l | 8037765 | | 8054043 | | |
| | Ø90 cm | | 70 cm | 53 kg | 400 l | 8038491 | | 8054287 | | |
| | Ø120 cm | | 90 cm | 88 kg | 950 l | | | 8054039 | | |
| KYOTO LOW | | | | | | | | | | |
| | Ø44 cm | | 36 cm | 7 kg | 40 l | 8053716 | | 8054044 | | |
| | Ø53 cm | | 40 cm | 12,5 kg | 70 l | 8053718 | | 8054045 | | |
| | Ø70 cm | | 45 cm | 20 kg | 150 l | 8053733 | | 8054046 | | |
| | Ø90 cm | | 50 cm | 38 kg | 280 l | 8053727 | | 8054047 | | |
| | Ø120 cm | | 65 cm | 80 kg | 650 l | | | 8056589 | | |
| OSAKA | | | | | | | | | | |
| | 35 cm | 35 cm | 36 cm | 7 kg | 29 l | 8043903 | | 8053981 | | |
| | 44 cm | 44 cm | 45 cm | 10 kg | 60 l | 8043902 | | 8054052 | | |
| | 53 cm | 53 cm | 55 cm | 15,5 kg | 105 l | 8043607 | | 8054053 | | |
| | 70 cm | 70 cm | 54 cm | 27 kg | 180 l | 8043608 | | 8054054 | | |
| | 90 cm | 90 cm | 70 cm | 60 kg | 480 l | 8049670 | | 8054055 | | |
| OSAKA LOW | | | | | | | | | | |
| | 44 cm | 44 cm | 36 cm | 8,5 kg | 50 l | 8053805 | | 8054056 | | |
| | 53 cm | 53 cm | 40 cm | 11 kg | 70 l | 8053810 | | 8054057 | | |
| | 70 cm | 70 cm | 45 cm | 20,5 kg | 150 l | 8053801 | | 8054058 | | |
| | 90 cm | 90 cm | 50 cm | 43 kg | 280 l | 8053766 | | 8054059 | | |
| OSAKA 106 | | | | | | | | | | |
| | 106 cm | 36 cm | 36 cm | 19 kg | 480 l | 8048502 | | 8054051 | | |
| RONCO | | | | | | | | | | |
| | Ø57,2 cm | | 44 cm | 14 kg | 70 l | 8063241 | | 8065982 | | |
| | Ø70,2 cm | | 54 cm | 21 kg | 150 l | 8063242 | | 8065983 | | |
| | Ø142,9 cm | | 110 cm | 107 kg | 1400 l | | | 8065981** | | |

** on demand | auf Anfrage | sur demande | su richiesta

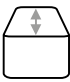

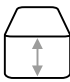








6 SOFTLINE

| |  |  |  |  |  | | | | | |
|--|---|---|---|---|---|---------------|---------|---------------|-----------------------|-----------------|
| | | | | | | GREY | | ANTRACITE | NATURAL EXPRESSION | CUSTOM COLOR |
| GEISHA  | | Ø44 cm | 65 cm | 13 kg | 85 l | No 8042369 | CHF | No 8054033 | CHF | CHF |
| TOKYO  | (1) | 44 cm | 44 cm | 45 cm | 10 kg | 45 l | 8043555 | | 8054080 | |
| | (2) | 53 cm | 53 cm | 55 cm | 19 kg | 80 l | 8047399 | | 8054081 | |
| | (3) | 70 cm | 70 cm | 40 cm | 16 kg | 70 l | 8038514 | | 8054082 | |
| TOKYO SAUCER  | (1) | 44 cm | 44 cm | 5,5 cm | 1,1 kg | | 8050594 | | 8054083 | |
| | (2) | 53 cm | 53 cm | 5,5 cm | 1,4 kg | | 8052498 | | 8054084 | |
| | (3) | 70 cm | 70 cm | 5,5 cm | 2 kg | | 8042751 | | 8053982 | |
| SAMURAI  | | 44 cm | 44 cm | 65 cm | 14 kg | 95 l | 8042739 | | 8054070 | |
| TRENTA-3  | | 33 cm | 33 cm | 66 cm | 9 kg | 60 l | 8061833 | | 8061834 | |
| SESSANTA-6  | | 66 cm | 33 cm | 66 cm | 13 kg | 120 l | 8061831 | | 8061832 | |
| TWISTA  | | 60 cm | 30 cm | 60 cm | 19 kg | 85 l | 8028686 | | 8054086 | |

7 SOFTLINE

| | | | | | | | GREY | | NATURAL EXPRESSION | CUSTOM COLOR |
|----------------------|---|---------|--------|---------|---------|--------------|------|---------|--------------------|--------------|
| ALADIN | | | | | | No | CHF | | CHF | CHF |
| | | | | | | | | | | |
| | Ø112 cm | 59 cm | 75 kg | 370 l | | | | 8053983 | | |
| | Ø138 cm | 73 cm | 125 kg | 690 l | | | | 8053984 | | |
| | Ø165 cm | 87 cm | 145 kg | 1200 l | | | | 8053985 | | |
| BONSAI | | | | | | | | | | |
| | | | | | | | | | | |
| | Ø112 cm | 40 cm | 38 kg | 260 l | | | | 8053996 | | |
| | Ø138 cm | 66 cm | 50 kg | 480 l | | | | 8053997 | | |
| | Ø165 cm | 60 cm | 78 kg | 820 l | | | | 8053998 | | |
| Hive | | | | | | | | | | |
| | | | | | | | | | | |
| | Ø80 cm | 70 cm | 39 kg | 310 l | 8084027 | | | 8084030 | | |
| SPINDEL | | | | | | | | | | |
| | | | | | | | | | | |
| | Ø37 cm | 60 cm | 6,5 kg | 7 l | 8011793 | | | | | |
| | Ø56 cm | 92 cm | 14 kg | 20 l | 8011801 | | | | | |
| BIASCA | | | | | | | | | | |
| | | | | | | | | | | |
| | 93 cm | 93 cm | 32 cm | 14,5 kg | 31 l | 8011802 | | | | |
| MAIA | | | | | | | | | | |
| | | | | | | | | | | |
| | Ø59 cm | 50 cm | 15 kg | | 8076750 | | | 8076751 | | |
| SAUCER ROUND | | | | | | | | | | |
| | | | | | | | | | | |
| (1) | Ø30 cm | 4,5 cm | 1 kg | | 8011732 | | | 8053930 | | |
| (2) | Ø35 cm | 4,5 cm | 1,2 kg | | 8011736 | | | 8053931 | | |
| (3) | Ø40 cm | 5 cm | 1,6 kg | | 8011745 | | | 8053934 | | |
| (4) | Ø46 cm | 5 cm | 2,1 kg | | 8011755 | | | 8053935 | | |
| (5) | Ø50,5 cm | 5 cm | 2,4 kg | | 8011758 | | | 8053936 | | |
| (6) | Ø62,5 cm | 5 cm | 2,6 kg | | 8049351 | | | 8054092 | | |
| | (1) KYOTO Ø35 cm (2) ALTO (3) GEISHA, KYOTO Ø44 cm, (4) KYOTO Ø53 cm, SPINDEL Ø37 cm, SUMO Ø35 cm (5) LAUSANNE Ø70 cm, SUMO Ø45 cm (6) KYOTO Ø70 cm, DELTA Ø50 cm, MAIA Ø62,5 cm | | | | | | | | | |
| SAUCER SQUARE | | | | | | | | | | |
| | | | | | | | | | | |
| (1) | 30 cm | 30 cm | 4,5 cm | 1,5 kg | 8032308 | 52.- | | 8053980 | | |
| (2) | 40 cm | 40 cm | 5 cm | 2 kg | 8053777 | 69.- | | 8054088 | | |
| (3) | 45 cm | 45 cm | 5 cm | 2,2 kg | 8050521 | 113.- | | 8054089 | | |
| (4) | 62,5 cm | 62,5 cm | 5 cm | 3 kg | 8042846 | 126.- | | 8054091 | | |
| | (1) OSAKA 35×35 cm, QUADRA (2) OSAKA 44×44 cm, SAMURAI (3) OSAKA 53×53 cm (4) OSAKA 70×70 cm | | | | | | | | | |

8 URBAN GARDENING

| |  |  |  |  |  | | WHITE | ANTRACITE | NATURAL EXPRESSION | CUSTOM COLOR |
|---|---|---|---|---|---|---------|-------|-----------|-----------------------|-----------------|
| BALCONIA | | | | | | No | CHF | No | CHF | CHF |
|  | 40 cm | 17 cm | 17 cm | 3,5 kg | 8,2 l | 8011689 | | 8028246 | | |
| | 60 cm | 17 cm | 17 cm | 5,5 kg | 13,6 l | 8011701 | | 8027478 | | |
| | 80 cm | 17 cm | 17 cm | 6 kg | 18,4 l | 8011714 | | 8028247 | | |
| | 100 cm | 17 cm | 17 cm | 9 kg | 23 l | 8027322 | | 8032416 | | |
| BALCONIA DECOR | | | | | | | | | | |
|  | 40 cm | 17 cm | 17 cm | 3,5 kg | 8,2 l | 8011983 | | 8028243 | | |
| | 60 cm | 17 cm | 17 cm | 5,5 kg | 13,6 l | 8011986 | | 8027486 | | |
| | 80 cm | 17 cm | 17 cm | 6 kg | 18,4 l | 8011995 | | 8028244 | | |
| | 100 cm | 17 cm | 17 cm | 9 kg | 23 l | 8027323 | | 8032417 | | |
| BALCONIA RESERVOIR | | | | | | | | | | |
|  | 60 cm | 17 cm | 20 cm | 6,5 kg | 13,6 l | 8011992 | | | | |
| | | | | | | | | | | |
| | | | | | | | | | | |
| | | | | | | | | | | |
| BALCONIA | | | | | | | | | | |
|  | 43 cm | 20 cm | 3 cm | 1,1 kg | | 8011694 | | 8028248 | | |
| | 63 cm | 20 cm | 3 cm | 1,7 kg | | 8011708 | | 8028249 | | |
| | 83 cm | 20 cm | 3 cm | 2,5 kg | | 8011720 | | 8028250 | | |
| DELTA 25 | | | | | | | | | | |
|  | 80 cm | 25 cm | 25 cm | 13 kg | 35 l | 8011833 | | 8028255 | | |
| | 100 cm | 25 cm | 25 cm | 15 kg | 45 l | 8011838 | | 8028256 | | |
| DELTA | | | | | | | | | | |
|  | 83 cm | 28 cm | 6 cm | 3,2 kg | | 8078320 | | 8053928 | | |
| | 103 cm | 28 cm | 6 cm | 3,9 kg | | 8078322 | | 8053929 | | |

