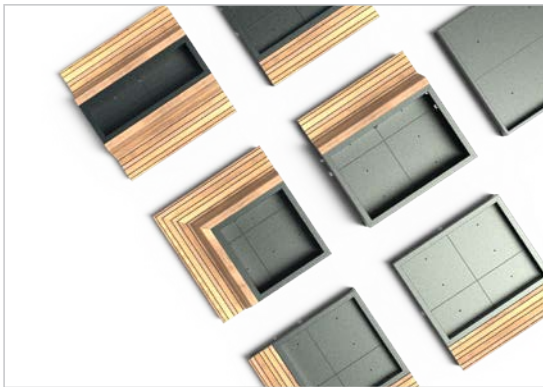




FURNS
STREET FURNITURE

LANDSCAPING OUR FUTURE

GREENPOINTS



Product description

With our modular greenpoints you can furnish every square flexible. The elements are designed to connect to each other. Thanks to the raised feet the models are easily movable.

SPECIFICATIONS

General

- Corten steel 3 mm
- Aluminum + RAL 4 mm
- 90mm high feet
- Wood: Garapa
- Beam size: 90 x 40 mm
- Placement: On ground level with forklift truck
- Warranty 5 years (expiring)

Options

- Bamboo Extreme
- Adjustable feet
- Fixing profile
- Custom made
- Tree care

Corten steel

- Brown-orange rust color
- Delivered unrusted
- Rusting process takes 4-5 months
- BIO rust accelerator available

IMPORTANT

Points of attention

- All products must be unpacked immediately after delivery.
- Every kind of (hard) wood will turn grey under the influence of UV radiation, weather and wind. The final colour depends on the starting colour.
- Wood is a natural product that "works" and will shrink or expand depending on temperature and moisture content.
- Hardwood can turn black when in contact with Corten steel, which will eventually turn grey.
- Corten Steel should never be constantly in moisture, it should drain well and ventilate in all situations.
- Corten Steel products are not (fully) rusted on delivery, we only use Corten steel type S355JOWP.
- Coastal areas: We do not recommend using Corten steel within a radius of 2 km from a coastline.
- During the weathering process rust residue can come off the product, which can result in stains.
- Drilling / grinding in the material is not permitted.

Maintenance

- Regular cleaning (WOCA exterior cleaner) and sealing (WOCA exterior oil) of the wood ensures that the pigment in the wood is retained longer and the discolouration process is delayed.
- Annual cleaning by removing dirt using clean tap water.
Note! Do not use a high-pressure cleaner.

PLACEMENT

PLACEMENT

1. Our greenpoints are made to be moved with a forklift/shovel with forks. The bins are reinforced at the bottom for picking up.

Pay attention! To prevent damage to the product, we recommend fitting the forks of the forklift truck protective material.

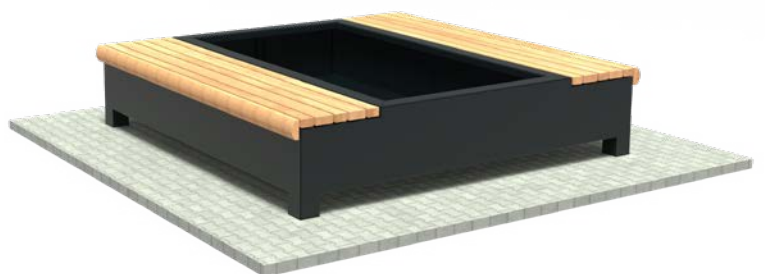
2. The bin should be picked up with extended spoons, so that they do not protrude through the bottom of the bin.

3. The containers must be moved carefully, as the center of gravity can move through the planting.



4. When setting down, the container should be placed horizontally and carefully.

Pay attention! If this does not happen, a bin can absorb a peak tension at one of the corners, for example, so that the tension that arises will manifest itself in visible damage in other places in the bin



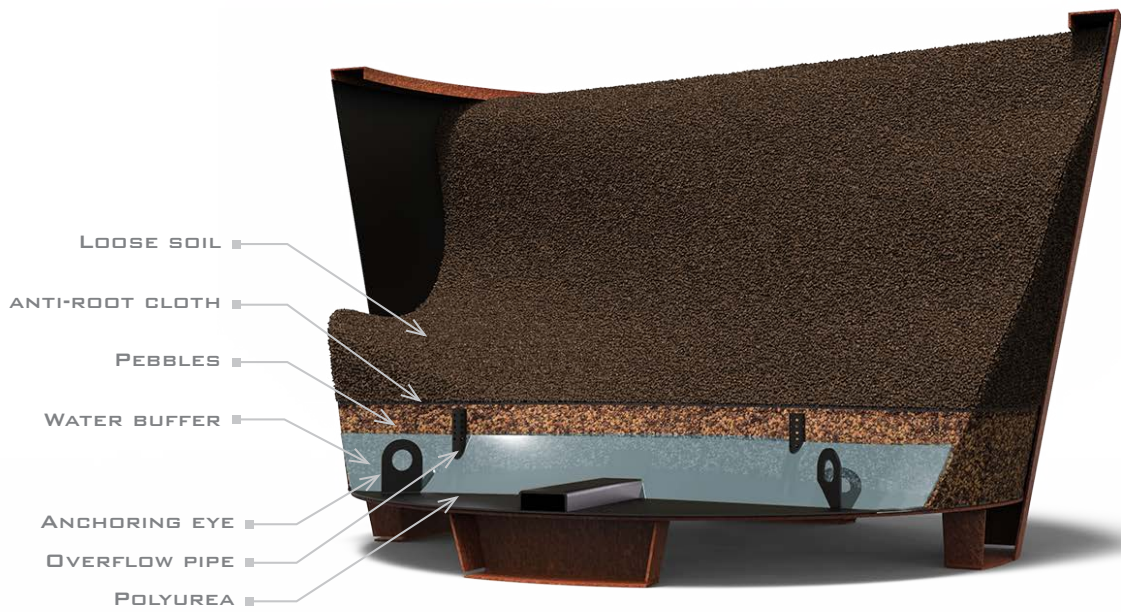
TREE CARE

TREE CARE SYSTEM

To optimally meet trees' needs, we can equip our planters with the Tree Care System. The planter is 100% waterproof, equipped with stem anchoring eyes and an overflow system for a water buffer.

Options

- Filler pipe (closeable)



Standard planter

Tree Care planter



MODELS

For a complete overview of all our products and specifications, please visit www.furns.com.



LOW ONE-SIDED



HIGH ONE-SIDED



LOW DOUBLE-SIDED



HIGH DOUBLE-SIDED



LOW CORNER



HIGH CORNER

OPTIONS



CUSTOM MADE



TREE CARE

ACCESSORIES

ACCESSORIES

All our accessories meet the highest standards and are an highly suitable addition to our products. Visit www.furns.com for a complete overview of our accessories.



CLEANER & PROTECTOR

We recommend cleaning our products at least once a year. For optimal results, use the ADEZZ BIO Cleaner & Protector detergent. Always read the instructions on the package carefully before use.



CORTEN VARNISH

To stop the rusting process, Corten varnish can be applied on the Corten products. Always read the instructions on the package carefully before use.