



People.
Forms.
Swisspearl.

Myth.
Eternity.

6

Natural.
Consistent.
Hand-made.

74

Planters &
Objects

20

76 Material
78 Manufactory
82 Designer

- 22 Custom Line
- 23 Guhl Chair
- 24 Sponeck
- 25 Twista
- 26 Sumo
- 27 Spindel
- 28 Hive
- 30 Samurai
- 31 Maia
- 32 Ronco
- 33 Kolonna
- 34 Trash Cube
- 35 Birdy
- 36 Bonsai
- 37 Lausanne
- 38 Aladin
- 39 Kyoto
- 40 Tokyo
- 41 Osaka
- 42 Geisha
- 43 Alto
- 44 Sessanta
- 45 Trenta
- 46 Delta
- 47 Delta 25
- 48 Balconia
- 49 Biasca
- 50 Porto
- 51 Dune
- 52 Cheers
- 53 Mold Lamp
- 54 Hocuspocus
- 55 Ecal
- 56 Die Bank
- 57 Saucer

Endlessly
happy.

84

Contact

88

We can also offer
Customized.

58

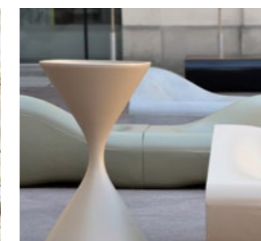
- 60 Custom Line
- 62 Custom Made
- 66 Custom Colours
- 67 Standard Colours
- 68 Indoor Greening
- 70 Plant Advice
- 72 Cleaning

**swiss
pearl**®

6



20



58



74



84



Myth

People have lived with nature for ages. We see the seasons, feel the elements, adorn ourselves with plants. As it changes, it gives us support through its recurring cycles

We share the same ambitions. Our furniture, planters and objects for indoors and outdoors are made precisely for this purpose. Neither water, frost nor heat can harm them. Through all seasons, phases of life and the ever faster pace of life, they are quiet companions, providing peace and reliability.

Eternity.





With their durability, our planters and design objects create space for lasting memories and life. Nature is allowed to show all facets of its uniqueness and change. Durability does not mean standstill. Quite the opposite. It is just the thread running through history. Your very personal, individually shaped history.

Nature is part of our living space - for many, it is a place of refuge in our fast-paced times, providing relaxation and a healing effect on many levels. However, how we like to experience our outside world is as varied as the plants that surround us.



The beauty of designing gardens, balconies, terraces, meeting zones and indoor spaces is that we not only make our fellow human beings and ourselves happy. We can also give back important habitats to nature itself.





Nothing is as unique and incomparable as nature itself and its power. Nature is life. No two leaves are alike, no two days are the same. When creating your garden, preferably choose native plants that offer wild bees, butterflies and insects valuable food and a place to retreat with their bouquet of flowers.



Create living space,
yours and others



The Swisspearl garden and design collection got its start early: in 1912, the legendary Swisspearl flower box was the first planter made of fibre cement. Weather resistance, durability and high stability make this the perfect material for outdoor use.

In the 1950s, the Swiss interior and furniture designer Willy Guhl created the Loop Chair, a great design classic. Since then, numerous designers have discovered the malleability of fibre cement. The result is the unique Swisspearl garden collection.

We shape.
Natural, durable
and by hand.





"Sustainability" is a big word that is also significant when it comes to considering future generations.



Many people want to live more sustainably - but in practice it often doesn't seem so easy. It is difficult for us to give up beloved habits or to limit ourselves. Perhaps a first step is to see the change to a more sustainable life not as a renunciation, but as an enrichment: Run your hands once over products made of natural materials and enjoy the feel. Things that are handmade with care, robust and timelessly aesthetic make us happy for a long time. We don't need something new all the time. It is much more important that we always carry something else with us: a good feeling. This is sustainability in its most beautiful form.

Planters & Objects



Design by Swisspearl

Pure elegance. Tailor-made. The Planters of the Custom Line series made of fibre cement panels are ideally suited for terrace or garden planting according to individual wishes. More on page 60.

L 115cm × W 55cm × H 65cm

L 100cm × W 55cm × H 75cm

Anthracite RAL 7016 ●



Chair

L 79cm × W 54cm × H 61cm

Table

L 72cm × W 40cm × H 22cm

Natural grey ●



Design by Willy Guhl

In 1954, the designer Willy Guhl created a design icon with a fibre cement panel joined to form an endless loop. The sculptural armchair, also known as the Loop Chair, impresses with its simplicity and classic elegance.

It is matched by the side table with two round openings that serve as bottle holders.



Custom Line

Guhl

Design by Julia von Sponeck

What a combination. Designer Julia von Sponeck has abandoned the classic loop shape for the armchair and worked with two fibre cement panels lying on top of each other. This creates a dynamic, ergonomically sophisticated shape that is particularly comfortable to sit on. With the matching side table, the result is a beautifully shaped chair and table ensemble.

Chair

L 77,5cm x W 50cm x H 60cm

Table

L 50cm x W 50cm x H 25cm

Natural grey



Design by Martin Mostböck

Imagination sets accents. Honoured with the "Red Dot Design Award", Twista's slightly twisted design lends exciting eye-catchers to the most beautiful terraces and interiors.

L 60cm x W 30cm x H 60cm

Natural grey, Anthracite



Custom Colour



Sponeck

Twista

Design by Sternform

Sumo's belly-like shape gives roots plenty of space to grow.

Ø 35cm x H 40cm

Ø 45cm x H 50cm

Natural grey, Anthracite

Expression

Natural

Custom Colour



Design by Swisspearl

Spindel, also known as the Diabolo, is simply masterful with its shape that tapers in the middle. This piece can be used as an iconic planter, or alternatively as an indoor sculpture. Available in two different sizes.

Ø 37cm x H 60cm

Ø 56cm x H 92cm

Natural grey

Custom Colour



Sumo

Spindel

Design by Martin Mostböck

Inspired by nature – a planter, whose undulating shape is reminiscent of beehives. With a height of 70cm and a diameter of 80cm, Hive offers even large plants enough space to unfold. Hive is available in natural gray and anthracite, but can be ordered in all RAL colours on request.

Ø 80cm x H 70cm

Natural grey, Anthracite

Custom Colour



Hive

Design by Michel Bruggmann

Samurai is a tall, slim planter that is perfect for deep-rooting plants such as roses and rosemary. Samurai planters make a particularly effective statement at the entrance of hotels and restaurants.

L 44cm x W 44cm x H 65cm

Natural grey, Anthracite

Expression

Natural

Custom Colour

Design by Michel Charlot

Maia dances to a different rhythm. The slightly wavy, playful surface creates a contrast to our other planters with smooth surfaces. The new shape also comes with new soft natural colours like jade, granite and slate.

Ø 59cm x H 50cm

Natural grey, Anthracite

Expression

Natural

Custom Colour



Samurai

Maia

Design by Savioz Fabrizzi Architectes

With its Mediterranean look and soft shape, the Ronco range of containers creates an atmospheric ambience without being obtrusive. Thanks to the gentle bulge, Ronco offers enough space for large roots and is therefore the ideal planter for larger plants.

Ø 57,2cm × H 44cm

Ø 70,2cm × H 54cm

Ø 142,9cm × H 110cm

Natural grey, Anthracite

Expression

Natural

Custom Colour

Design by Martin Mostböck

Inspired by classical antiquity, this planter is a future classic. The slightly corrugated shape is a refreshing evolution of the classic circle, creating an exciting yet harmonious accent in your home. Received the Good Design Award 2019. Available in three different sizes.

Ø 60cm × H 50cm

Ø 60cm × H 60cm

Ø 80cm × H 70cm

Natural grey, Anthracite

Custom Colour



Ronco

Kolonna

Design by Nicolas le Moigne

Waste is generated at the Swisspearl factory during the production of various garden and design pieces. This waste finds a new life in the Trash Cube. Offcuts and leftover material are reshaped to form a stool or side table. The different pieces of waste used make each Trash Cube truly unique.

L 31cm × W 31cm × H 36cm

Natural grey ●



Design by Vladimir Jaccard

The Birdy nesting box can provide a sheltered cavity nesting birds a protected place to raise their young. Swisspearl fibre cement also provides the right conditions for this. It is not only weatherproof and waterproof, but also breathable and moisture-regulating.

L 21cm × W 16cm × H 22cm

Natural grey ●

Trash Cube

Birdy

Design by Patrick Schöni

Bonsai is a planter that is very large in diameter and elegantly sets off large plants and even smaller trees with its round, flat shape.

Ø 112cm × H 40cm

Ø 138cm × H 66cm

Ø 165cm × H 60cm

Natural grey, Anthracite

Custom Colour



Bonsai

Design by Swisspearl

Lausanne is our flat, harmoniously round planter. The wide base and the low height ensure high stability.

Ø 70cm × H 23cm

Ø 90cm × H 30cm

Natural grey, Anthracite

Custom Colour



Lausanne

Design by Patrick Schöni

Aladin fulfils your very big wishes for a planter. The two-part design with removable ring simplifies repotting later. A water overflow with water reservoir ensures ensures a long-lasting water supply for the planting.

Ø 112cm × H 59cm

Ø 138cm × H 73cm

Ø 165cm × H 87cm

Anthracite ●

Custom Colour ●



Kyoto Low

Ø 44cm × H 36cm

Ø 53cm × H 40cm

Ø 70cm × H 45cm

Ø 90cm × H 50cm

Ø 120cm × H 65cm

Kyoto

Ø 35cm × H 36cm

Ø 44cm × H 45cm

Ø 53cm × H 55cm

Ø 70cm × H 54cm

Ø 90cm × H 70cm

Ø 120cm × H 90cm

Natural grey, Anthracite ● ●

Expression ● ● ● ● ● ○

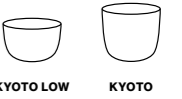
Natural ● ● ● ●

Custom Colour ●



Design by Michel Bruggmann

Elegance combined with classic design - that is the Kyoto planter. Available in eleven different sizes, it skilfully showcases perennials, shrubs and small trees.







Aladin





Kyoto

Design by Michel Bruggmann

The Tokyo planter not only impresses with its unusual triangular shape. It also convinces with its large planting area. In entrance areas or on forecourts, its unique shape can be used to create a sense of direction and dynamism.

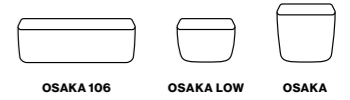
L 44 cm × W 44 cm × H 45 cm
L 53 cm × W 53 cm × H 55 cm
L 70 cm × W 70 cm × H 40 cm
Natural grey, Anthracite 
Expression 
Natural 
Custom Colour 

Osaka 106
L 106 cm × B 36 cm × H 36 cm
Osaka Low
L 44 cm × W 44 cm × H 36 cm
L 53 cm × W 53 cm × H 40 cm
L 70 cm × W 70 cm × H 45 cm
L 90 cm × W 90 cm × H 50 cm

Osaka
L 35 cm × B 35 cm × H 36 cm
L 44 cm × B 44 cm × H 45 cm
L 53 cm × B 53 cm × H 55 cm
L 70 cm × B 70 cm × H 54 cm
L 90 cm × B 90 cm × H 70 cm
Natural grey, Anthracite 
Expression 
Natural 
Custom Colour 

Design by Michel Bruggmann

Strong, robust - and yet light and delicate. The Osaka planter with its rounded corners is available in ten different sizes. The planters offer space for everything from small herb beds on the balcony to flower compositions in the garden.



Tokyo

Osaka

Design by Michel Bruggmann

With a height of 65 cm, the tall and narrow design of Geisha with timeless, gentle curves is the ideal planter for deep-rooted plants.

- Ø 44 cm x H 65 cm
- Natural grey, Anthracite
- Expression
- Natural
- Custom Colour



Design by Carmen Humbel and Thomas Geiger

High, round and widening conically towards the top - this is how the Alto planter presents itself. Available in three sizes up to a height of 75 cm.

- Ø 39/26 cm x H 55 cm
- Ø 42/26 cm x H 65 cm
- Ø 45/26 cm x H 75 cm
- Natural grey, Anthracite
- Custom Colour



Geisha

Alto

Design by Swisspearl

Sessanta, sixty-six. With a width and height of 66 cm, this planter forms a harmonious square when viewed from the front. Sessanta can be optimally combined with the Trenta planter.

L 66cm × W 33cm × H 66cm

Natural grey, Anthracite

Custom Colour



Design by Swisspearl

Trenta, thirty-three. The slender counterpart to Sessanta. Classic, square - this is how the planter presents itself. Versatile in use, it skilfully sets the scene for plants with its simple form.

L 33cm × W 33cm × H 66cm

Natural grey, Anthracite

Custom Colour



Sessanta

Trenta

Rectangular, square or round. Delta is available in many different sizes and shapes - to suit your individual requirements. Set accents with different shapes and colours.

Delta 35	L 100cm × W 45cm × H 45cm	L 80 cm × W 55cm × H 60cm
L 80cm × W 30cm × H 35cm	L 120cm × W 45cm × H 45cm	L 100cm × W 55cm × H 60cm
L 100cm × W 30cm × H 35cm	L 140cm × W 45cm × H 45cm	L 120cm × W 55cm × H 60cm
Delta 45	Ø 50cm × H 45cm	L 140cm × W 55cm × H 60cm
L 45cm × W 45cm × H 45cm	Ø 75cm × H 45cm	Ø 75cm × H 60cm
L 60cm × W 60cm × H 45cm	Ø 100cm × H 45cm	Ø 100cm × H 60cm
L 80cm × W 80cm × H 45cm	Delta 60	Natural grey, Anthracite <input type="checkbox"/> <input checked="" type="checkbox"/>
L 100cm × W 100cm × H 45cm	L 60cm × W 60cm × H 60cm	Custom Colour <input checked="" type="checkbox"/>
L 60cm × W 45cm × H 45cm	L 80cm × W 80cm × H 60cm	
L 80cm × W 45cm × H 45cm	L 100cm × W 100cm × H 60cm	

Delta 25's small size makes it ideal for urban gardening in limited spaces. The elongated design provides excellent protection against frost, allowing flowers, herbs and vegetables to thrive.

Delta 25
L 80cm × W 25cm × H 25cm
L 100cm × W 25cm × H 25cm
Delta 25 Saucer
L 83cm × W 28cm × H 6cm
L 103cm × W 28cm × H 6cm
White, Anthracite <input type="checkbox"/> <input checked="" type="checkbox"/>



Delta

Delta 25

Design by Swisspearl

Timeless design that resists frost and gives flowers and herbs a new home. Made of breathable and moisture-regulating fibre cement, our Balconia are particularly suitable for urban gardening, as they defy wind and weather.

Balconia	Balconia Decor
L 40cm × W 17cm × H 17cm	L 40cm × W 17cm × H 17cm
L 60cm × W 17cm × H 17cm	L 60cm × W 17cm × H 17cm
L 80cm × W 17cm × H 17cm	L 80cm × W 17cm × H 17cm
L 100cm × W 17cm × H 17cm	L 100cm × W 17cm × H 17cm
Balconia Untersetzer	Balconia Reservoir
L 43cm × W 20cm × H 3cm	L 60cm × W 17cm × H 20cm
L 63cm × W 20cm × H 3cm	White, Anthracite <input type="radio"/> <input checked="" type="radio"/>
L 83cm × W 20cm × H 3cm	



Design by Willy Guhl

The Biasca planter, also called Elephant's Ear, captivates with its organically inspired form. It received the "Good Form" award from the Swiss Werkbund in 1952. Today it is one of the Swiss design classics.

Ø 93cm × H 32cm

Natural grey

Custom Colour

Balconia

Biasca

Design by Michel Charlot

The design of the Porto trio - table, side table and stool - impresses with a concise design language and maximum reduction. The trio not only looks good outdoors - Porto also makes a strong statement indoors.

Table

Ø 71cm × H 23cm

Side Table

Ø 46cm × H 23cm

Stool

Ø 36cm × H 42cm

Natural grey ●



Design by Rainer Mutsch

The Dune lounge chair consists of four elements that can be arranged as individual pieces or modularly. Rainer Mutsch achieved an exciting 3D effect with round, soft design elements in the design.

Left, Right, Middle

L 96cm × W 95cm × H 60cm

Table

L 96cm × W 89cm × H 36cm

Anthracite, Titan ● ●

Porto

Dune

Design by Thing Design

The design of the multifunctional Cheers shelving system is a homage to the famous Swisspearl wave. Originally designed to store wine bottles, you can store anything from logs to towels in it.

L 38cm × W 25cm × H 31cm

Natural grey, Anthracite



Design by Michel Charlot

Inspired by the industrial lattice lamps, the designer also focuses on an "aged look" of the Mold hanging lamp. The different crack patterns that appear during the processing of the paper-thin fibre cement make each lamp unique.

Ø 27cm × H 32cm

Natural grey



Cheers

Mold Lamp

Design by Kevin Fries and Jakob Zumbühl

A fibre cement slab draped like a tablecloth: thanks to the enormous stability of hardened fibre cement, the designers were able to add magic to their design idea. The side table is stable even without a frame and seems to float in the air.

Ø 45cm x H 43cm

Ø 58cm x H 36cm

Natural grey, Anthracite ●●



Design by Nicolas Le Moigne

Inspired by the malleability of fibre cement, the designer and lecturer the designer and lecturer designed these elegant and resilient masterpieces with his students. The central fold gives the objects stability and lightness at the same time.

Chair

L 44cm x W 32cm x H 44cm

Table

L 70cm x W 49cm x H 27cm

Natural grey, Anthracite ●●



Hocuspocus

Ecal

Design by Michel Bruggmann

The bench by industrial designer Michel Bruggmann invites you to rest and pause in style. With its simple design, gently rounded corners and smooth surface, it blends into any environment - indoors and outdoors.

Dimensions per element

L 160cm x W 45cm x H 46cm

Anthracite



Design by Swisspearl

Round or square. The frost-resistant coasters make watering the plants much easier and protect the substrate from contamination. Thanks to an optional interior coating, the indoor use is possible without any problems.

Quadratisch

L 30cm x W 30cm x H 4,5cm

L 40cm x W 40cm x H 5cm

L 45cm x W 45cm x H 5cm

L 62,5cm x W 62,5cm x H 5cm

Rund

Ø 30cm x H 4,5cm

Ø 35cm x H 4,5cm

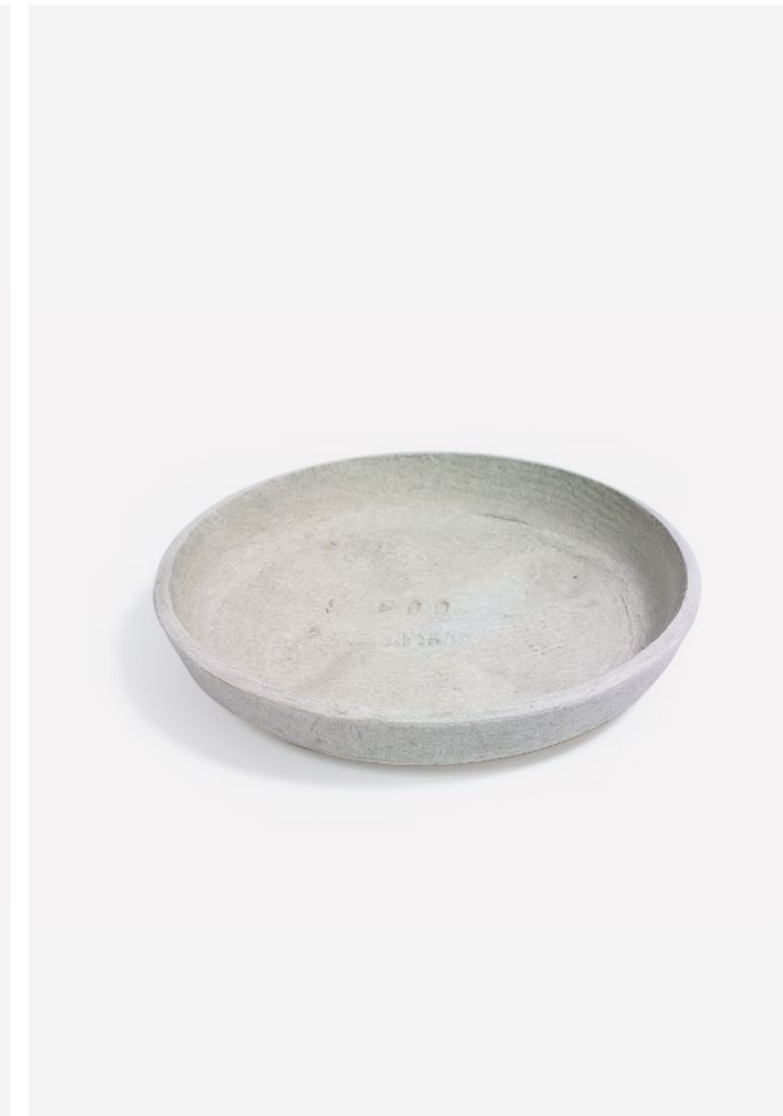
Ø 40cm x H 5cm

Ø 46cm x H 5cm

Ø 52cm x H 5cm

Ø 62,5cm x H 5cm

Natural grey, Anthracite



Die Bank

Saucer

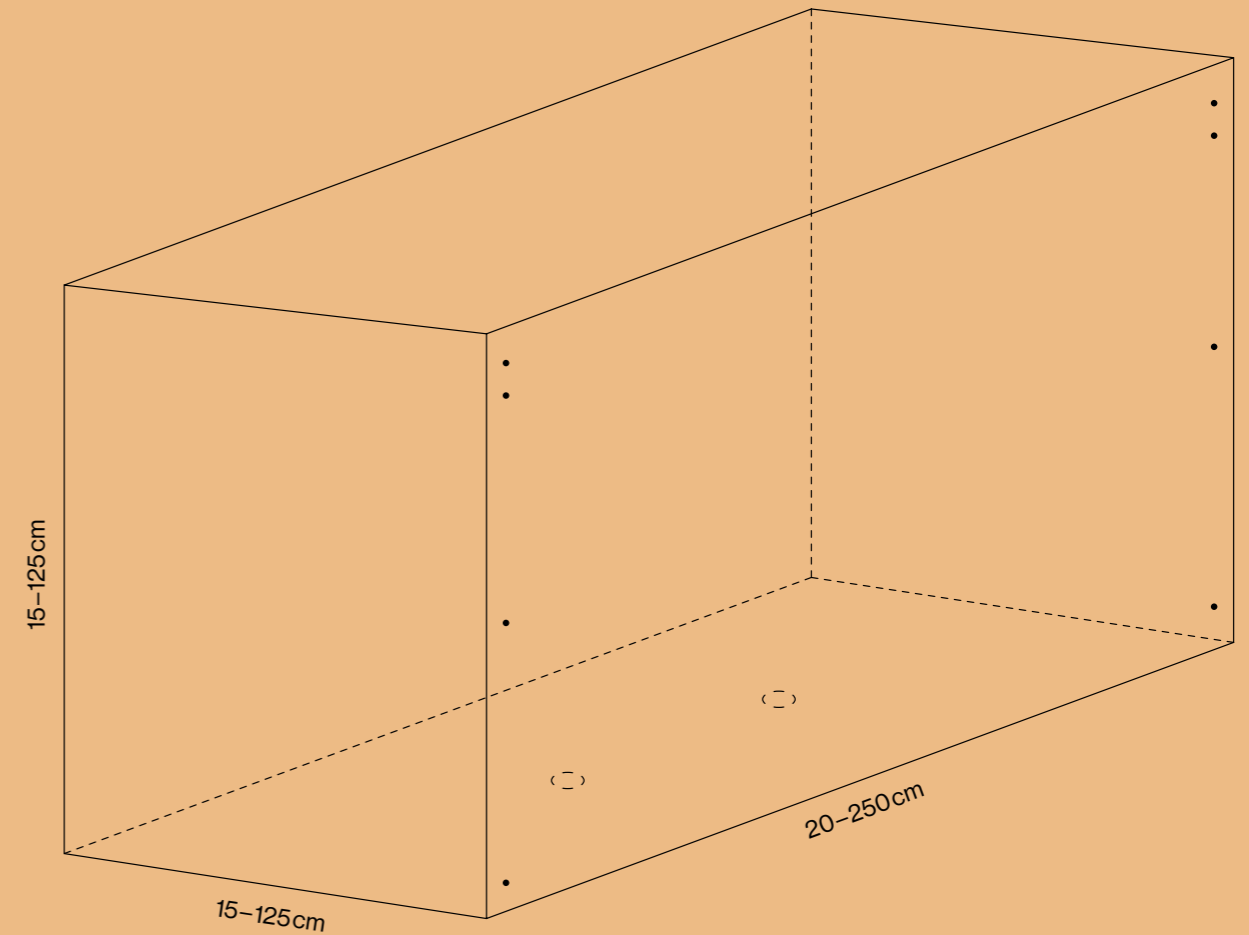
We can also offer Customized.

There are incredibly bizarre life forms. They are tiny and survive at -200°C , look like withered leaves, live on poisonous arsenic or live on poisonous arsenic or wear luminous fishing rods on their heads. Life shows itself in many different ways: bizarre, opulent, colourful, monochrome, opulent, colourful, monochrome, delicate, round, angular - and in all the forms in between. Nature is diversity and uniqueness. Perfectly adapted to the conditions. It is our great model. Let not be restricted in the design of gardens, terraces or squares.

Specialproduction of a two-piece design planter for Kalou Dubus (Gallery Desprez Breheret, Paris)

Custom Line

When your designs need to fit into a particular space, whether that's in a garden or other outdoor space, planters may need to have custom sizes and dimensions to meet your needs. For this reason, Swisspearl created Custom Line to deliver made-to-measure planters.



The Custom Line planters are not only good for decorating gardens, terraces and other outdoor spaces. They are also suitable as planted privacy screens or room dividers and thus become part of a well thought-out, unique overall design.

The planter of the Custom Line are made from Swisspearl fibre cement panels created to suit the customer's requirement. A maximum length of 2.5 m and a maximum height of 1.25 m are possible.



Volpatohatz
Special design for a plan-
ted facade in Birsfelden.

Swisspearl offers the possibility to realise individual products, solutions and designs - entirely according to your ideas. We support you with our expertise and technical know-how from consultation through to production. Many different and exciting projects have already been implemented - whether for and with product designers, architects, companies or the public sector. With us and with fibre cement, almost anything is possible.

Custom Made



ZHAW Winterthur
Interior greening of the new cam-
pus with a Delta special production
in custom size.



Planter G19 – Project for BURRI public elements

BURRI public elements has been designing public spaces in Switzerland and abroad with its products and projects for over 100 years. The G19 planter is a durable and weather-resistant planter made of Swisspearl fibre cement that can be used indoors and outdoors.



Culture in the open air - project for a group of artists in Freiburg

The 14 chairs made of Swisspearl fibre cement are part of the regular artists' panel in the city of Fribourg (CH). The art installation, designed by three former students from Fribourg, resembles an open-air auditorium that has slowly petrified over the course of time.

Custom Colours

Colours that match the individual design?
With the Custom Colours offer from Swisspearl, this is possible.

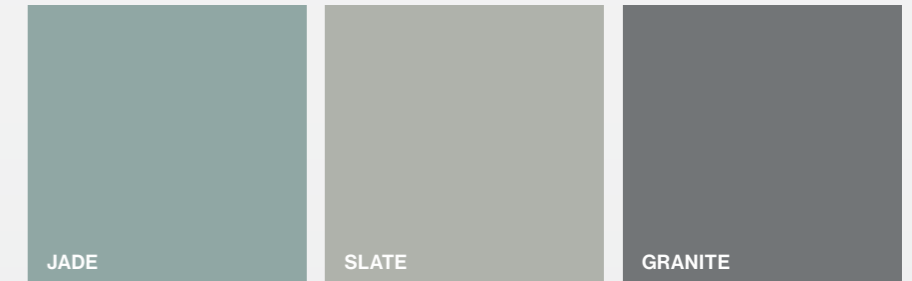


Custom Colours
Plant pots in the company colours?
A specific colour concept for the design of gardens, terraces and public outdoor spaces? Fancy individual splashes of colour in the outdoor area? Our custom colours range from classic anthracite to opaque colours and soft tones in a wide selection of RAL and NCS colours.

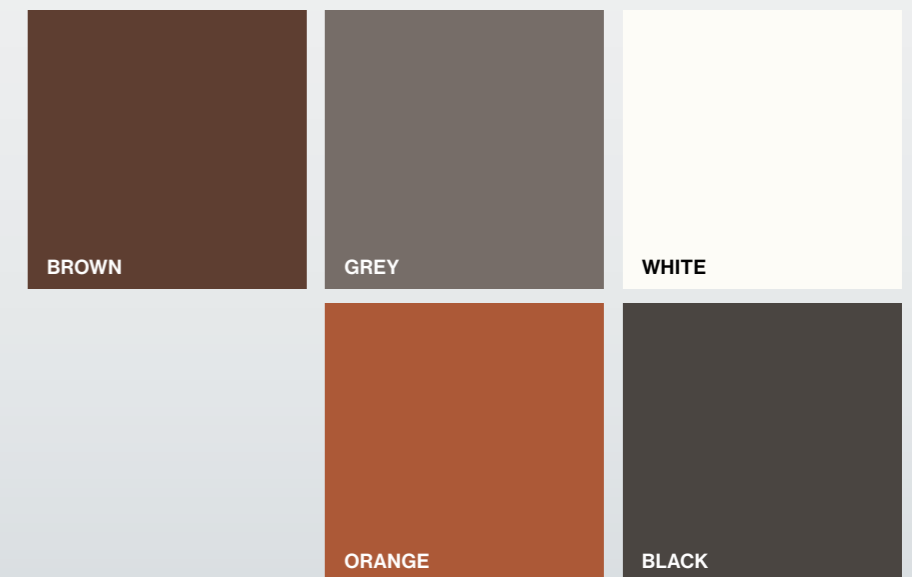
Classic
With natural grey and the classic anthracite, we offer two timelessly beautiful standard colours. The texture of the fibre cement is gracefully accentuated. Simple yet elegant, they present themselves in every garden, on every terrace.



Natural
Three soft shades - Jade, Slate and Granite - bring out the fibre cement structure beautifully despite the colourfulness. The three Natural Colours have a subtle yet modern effect and deservedly allow the plants to shine.



Expression
With our Expression Colors, we offer five expressive earth tones that blend in perfectly with the surroundings. The matt glaze beautifully sets off the rough feel of the natural fibre cement and accentuates every plant well.



Standard Colours

Indoor-planting

Design collaboration with Creaplant for the Airport Zurich AG

With "The Circle", a small city has been created at Zurich Airport. Here, office space, hotels and shopping are combined with culture and gastronomy. For this project, Swisspearl produced 663 custom-made planters in collaboration with Creaplant.



Interior planting brings nature indoors and lets it become part of the interior design. Plants in the workplace, in private areas or in public buildings create places where people enjoy spending time. Natural materials and plants have a proven positive effect on our health and well-being.

Not only do plants help improve air quality, they also can also be used to create aesthetically and harmoniously furnished interiors that enhance our performance and provide a relaxing environment. Our planters can be individually adapted to the needs and application in the interior and are 100 % waterproof thanks to a durable inner coating and a closed bottom hole.



The irrigation

Fibre cement is a breathable material that automatically regulates humidity. All planters have drainage openings at the bottom that must not be blocked so that water can run off and not freeze in winter. A clay shard is a proven and simple aid for this. Place it over the drainage hole. Some large pots also have a water reservoir and overflow, which significantly reduces the frequency of watering.

The perfect layering

To prevent waterlogging, first fill one third of the planter with expanded clay or coarse river pebbles. Then place a water-permeable fleece mat on which you place the plants. Then fill the planter with soil. Keep a rim of about 5 cm free to prevent the water from overflowing.

The ideal location

Choose a suitable spot for each plant with the right light and temperature conditions and a level base. Indoor planters are best placed on saucers so that overflowing water cannot damage the soil.

The repotting

Every few years a plant needs fresh soil, ideally in spring. To do this, remove the plant and its root system from the container, remove the old soil and fill in with fresh soil.

The cold protection

Due to the high final volume of the planters, the roots of the plants are well protected against frost. If you want to protect the planters additionally in winter, use a fleece or natural materials, never plastic, as this can form permanent white spots.

Planting advice

Cleaning

Natural patina

The natural components of Swisspearl fibre cement ensure that microorganisms or spore plants such as algae or moss feel at home on the natural surface. This creates an almost artistic patina over time. However, deposits or efflorescence can be easily cleaned with the help of the following cleaning instructions.

Cleaning agents

Cleaning vinegar (9.5 %) or a strong descaling agent (e.g. Durgol Forte). If necessary, a hand brush can be used for cleaning. To avoid damaging the material, the use of high-pressure or industrial cleaners should be avoided during cleaning. The suitability should first be tested on an inconspicuous area.

Cleaning of coated products

Treat the contaminated area or light lime efflorescence with plaster vinegar or a strong decalcifying agent and rinse with plenty of water. Make sure that vinegar cleaner does not get on bare metal parts and does not dry up. Cleaning should not be carried out with hot water and not on heated and sunlit surfaces.

Cleaning of natural grey products

Slight lime efflorescence on natural grey products will be specifically removed by the weather over time. Contamination on uncoated objects should always be cleaned over the entire surface and not partially, as possible colour differences may occur.





Natural. Consistent. Handmade.

External beauty is, of course, in the eye of the beholders. In collaboration with designers, we strive to achieve the purest and most timeless aesthetics possible because this corresponds to our concept of sustainability. Natural raw materials, high-quality work and responsibility towards people and the environment are the hallmarks of all our products. This applies not only to elegant planters, but to all Swisspearl building materials.

Material Fibre cement

Sustainable material

With these properties, fibre cement has made the leap from façade and roof panel to design material. The extraordinary durability and natural components make our fibre cement a sustainable material. It is weather-resistant, winterproof and very stable - a perfect symbiosis for outdoor vessels and objects.

Materiality

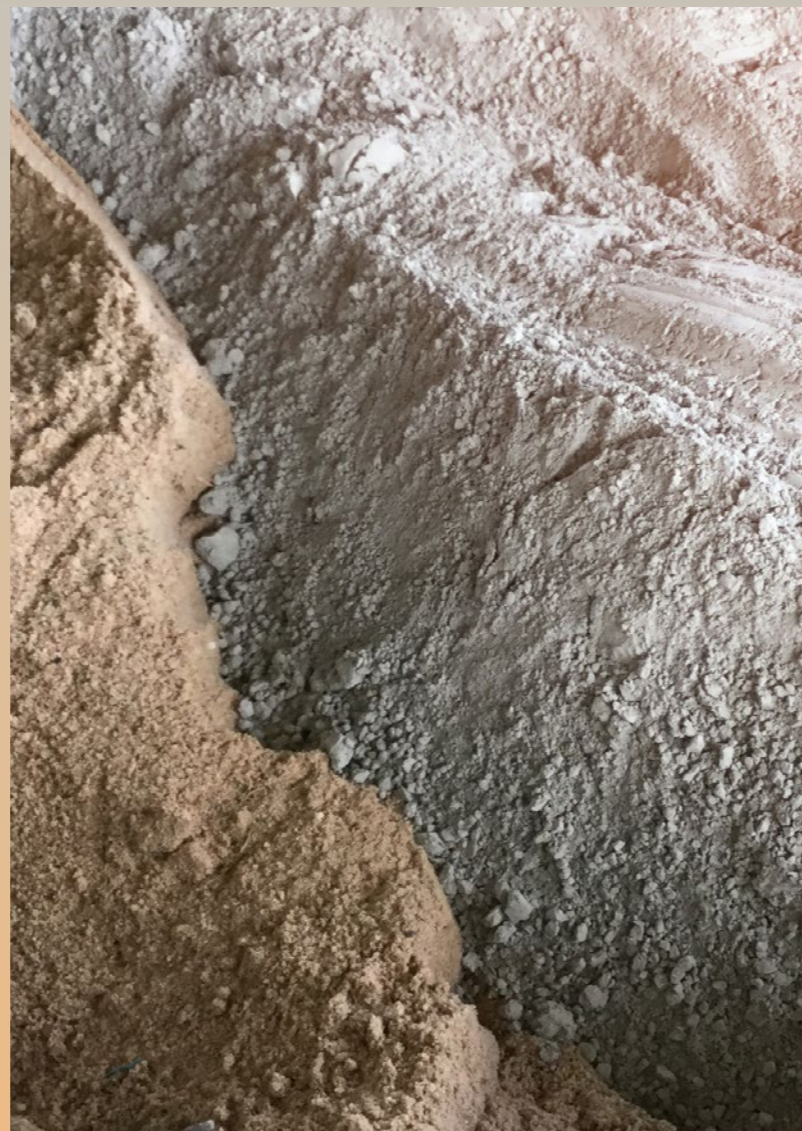
Natural raw materials and an enduring inventive spirit form the recipe for success of a product that is over 100 years old and has never gone out of fashion. In the hand, fibre cement shows its homogeneous materiality and its strength. To the eye, it reveals its unique character, its natural texture and the varied colours that are matched to the material.

Recipe for success

With expertise, precision and craftsmanship, the elements cement, pulp, water, recyclable reinforcing fibres, pigments and air are transformed into unique garden and design products. In the process, the raw materials are combined into a raw mass according to our own recipe. This is carefully wound, pressed, cut, dried and dyed under constant quality control. But only when the material meets the highest standards in all respects is it Swisspearl fibre cement.

Regional raw materials

The short transport routes of the regional raw materials are environmentally friendly. In addition, the production of fibre cement requires little energy compared to other building materials. With its long service life, fibre cement improves the ecological and economic balance.



The opening of the hand moulding shop at the Payerne plant in 1957 laid the foundation for the free design of designer objects and planters. As a pioneer in the production of fibre cement panels for façades and roofs, Swisspearl sought collaboration with architects and designers. In this way, the traditional company built a bridge between design and industry.



Manufactory





Humbel und Geiger



Patrick Schöni



Kevin Fries

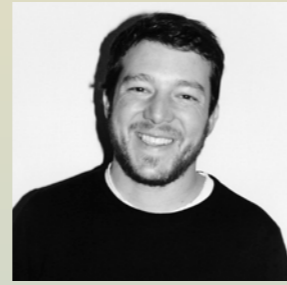
Hardly any other material offers as many creative possibilities as fibre cement. Maximum design flexibility, the material's purity and authenticity as well its incomparable, beautiful feel give plant pots and design objects made of Swisspearl fibre cement their unique, tangible appearance. It is no coincidence that a growing number of designers are creating unique objects with high aesthetic standards from fibre cement.



Martin Mostböck



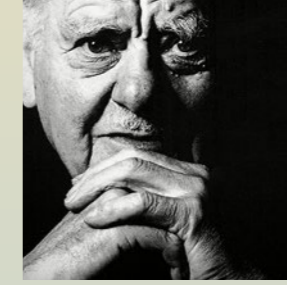
Michel Bruggmann



Michel Charlot



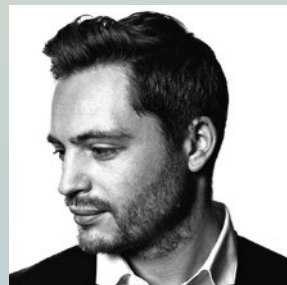
Rainer Mutsch



Willy Guhl



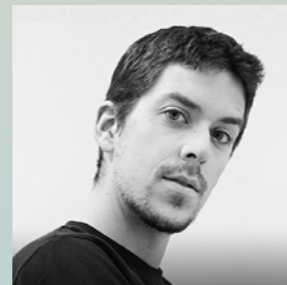
Savioz Fabrizzi



Nicolas Le Moigne



Julia von Sponeck



Vladimir Jaccard



Sternform



Thing Design

People shape Swisspearl.

Endlessly

We don't just design space - we design our future. With a durable, natural, extremely malleable material that creates everything. Your ideas and our future. Join us. Enjoy the design, the moment, nature. After all, there is room for infinite joy in a lifetime.

happy.







Swisspearl
CH-8867 Niederurnen
+41 55 617 1150
info@swisspearl.com

www.swisspearl.com

Member of the
Swisspearl Group

